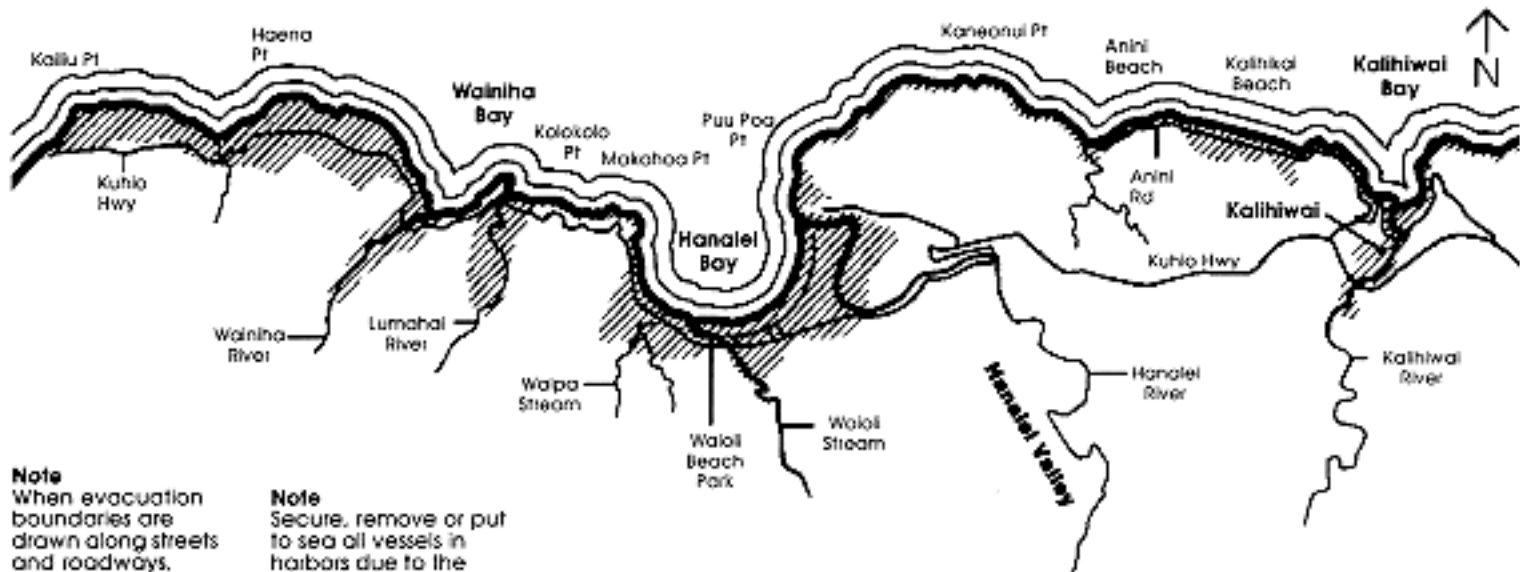


# Tsunami Evacuation Map 1: Kailiu Pt. to Kalihiwai Bay

## Note

Entire Hanalei village will be evacuated during a tsunami warning. All coastal zones within the North Shore (between Hanalei Village to Haena) will also be evacuation zones.



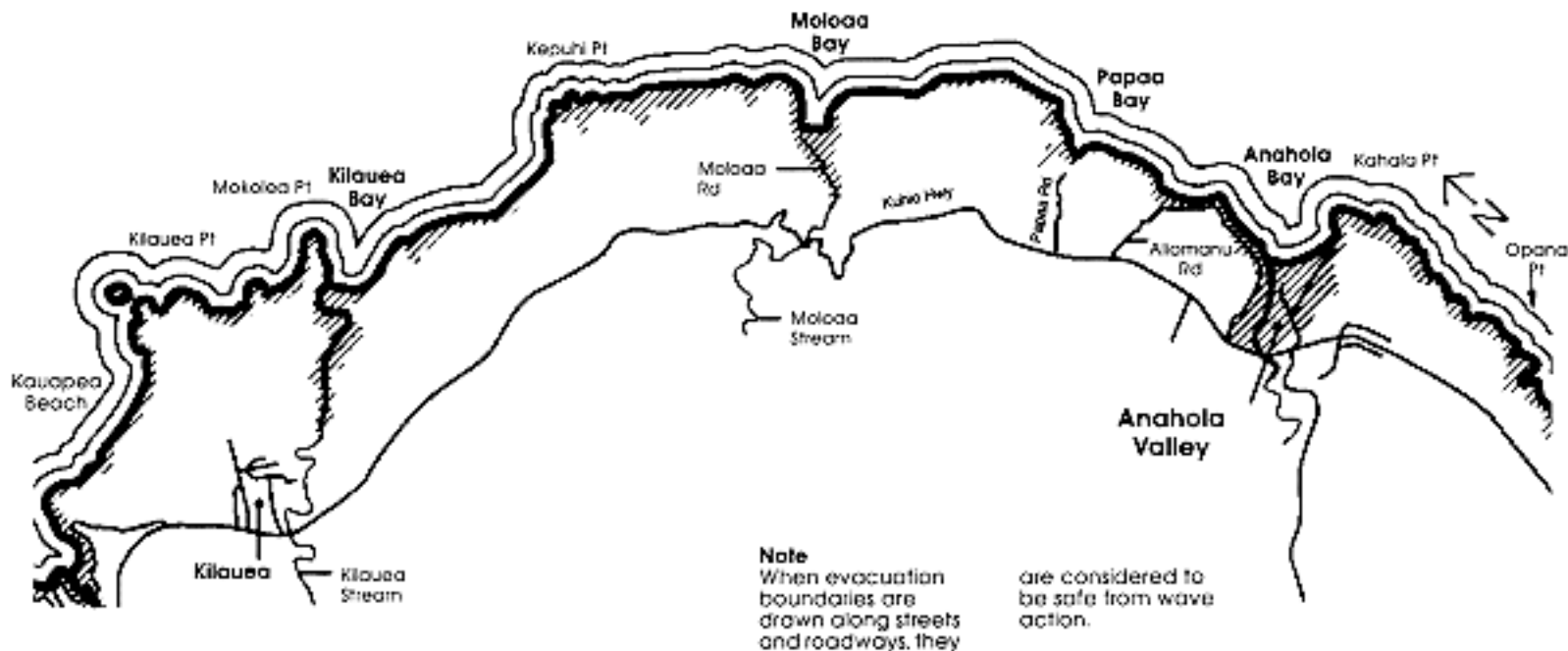
## Note

When evacuation boundaries are drawn along streets and roadways, they are considered to be safe from wave action.

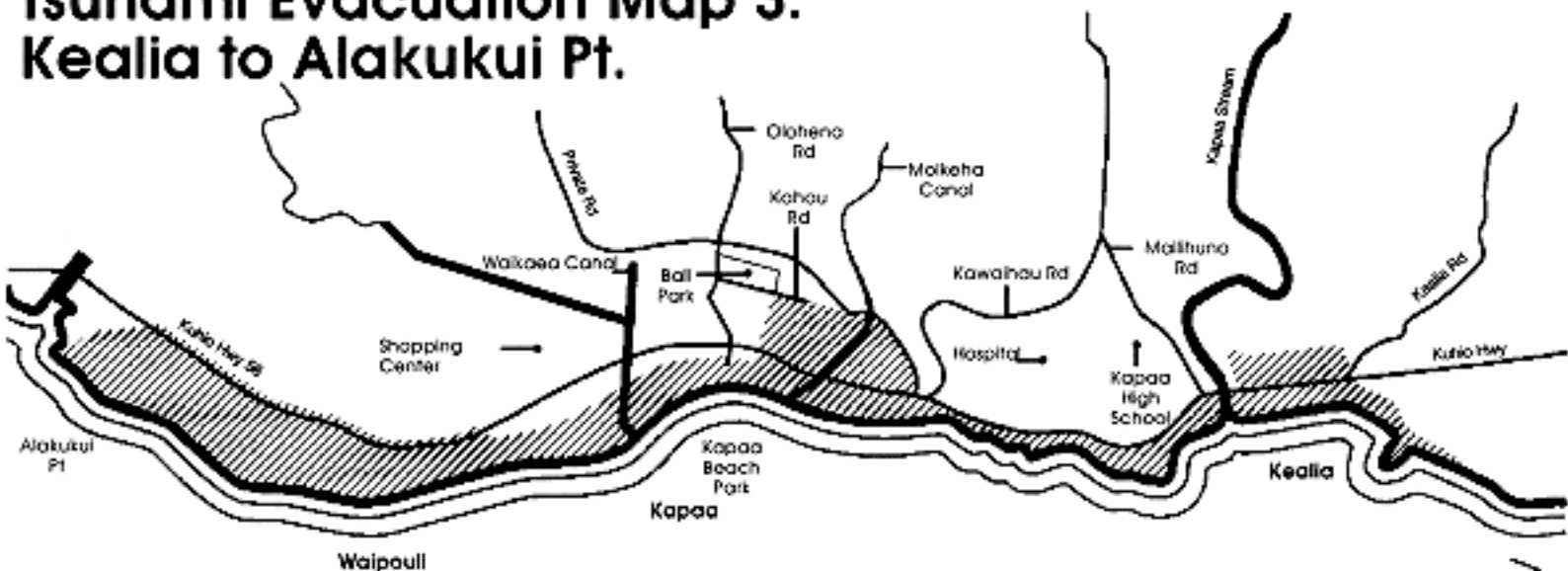
## Note

Secure, remove or put to sea all vessels in harbors due to the probability of strong currents and wave action.

# Tsunami Evacuation Map 2: Kauapea Beach to Anahola Bay



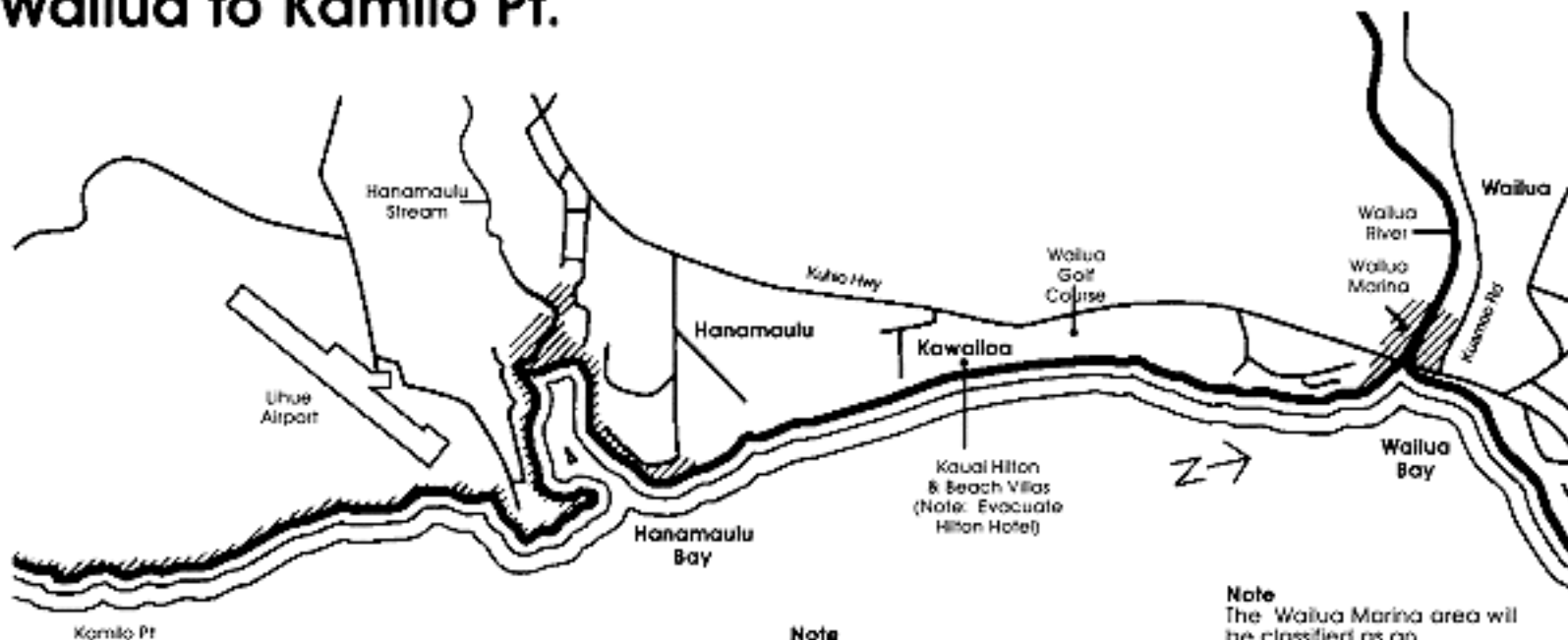
# Tsunami Evacuation Map 3: Kealia to Alakukui Pt.



**Note**  
When evacuation boundaries are drawn along streets and roadways, they are considered to be safe from wave action.

**Note**  
Evacuation for entire coastal area, up to Kuhio Highway in Kapaa town. Inland of the highway of Kealia area requires evacuation also.

# Tsunami Evacuation Map 4: Wailua to Kamilo Pt.



**Note**

Secure, remove or put to sea all vessels in harbors due to the probability of strong currents and wave action.

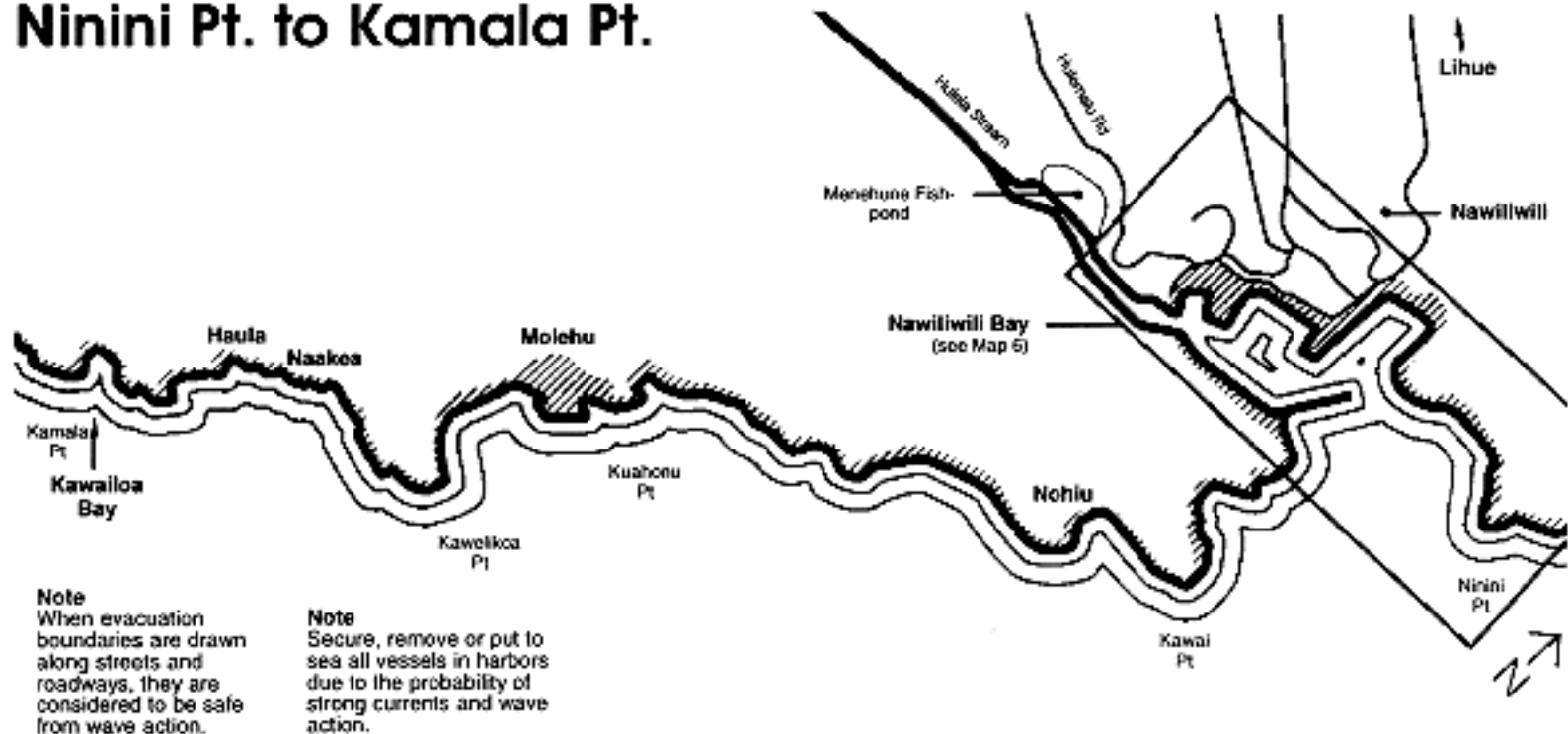
**Note**

When evacuation boundaries are drawn along streets and roadways, they are considered to be safe from wave action.

**Note**

The Wailua Marina area will be classified as an evacuation zone during tsunami hazards. Evacuation of properties across the Wailua river will also be evacuation zones.

# Tsunami Evacuation Map 5: Ninini Pt. to Kamala Pt.



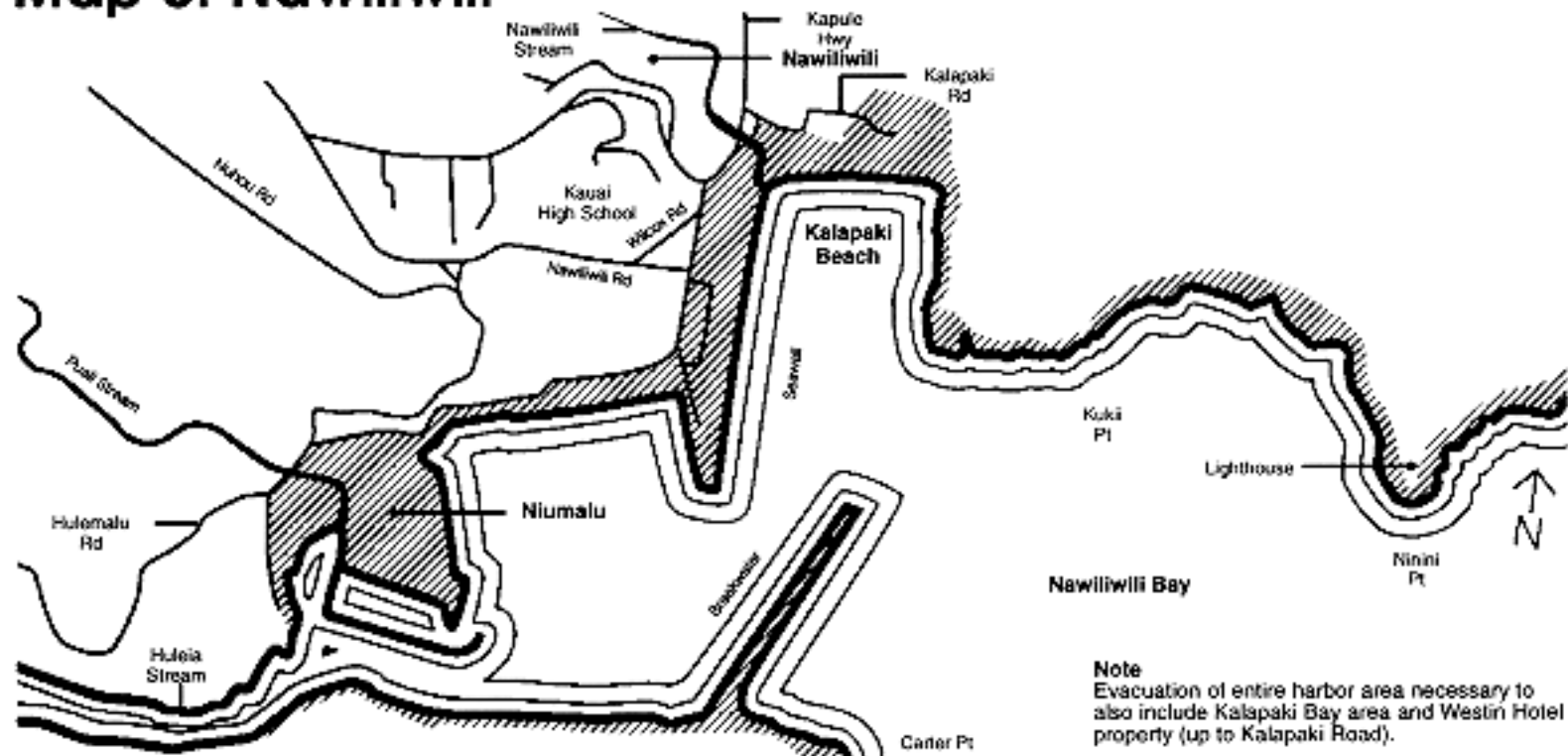
**Note**  
When evacuation boundaries are drawn along streets and roadways, they are considered to be safe from wave action.

**Note**  
Secure, remove or put to sea all vessels in harbors due to the probability of strong currents and wave action.

# Tsunami Evacuation Map 6: Nawiliwili

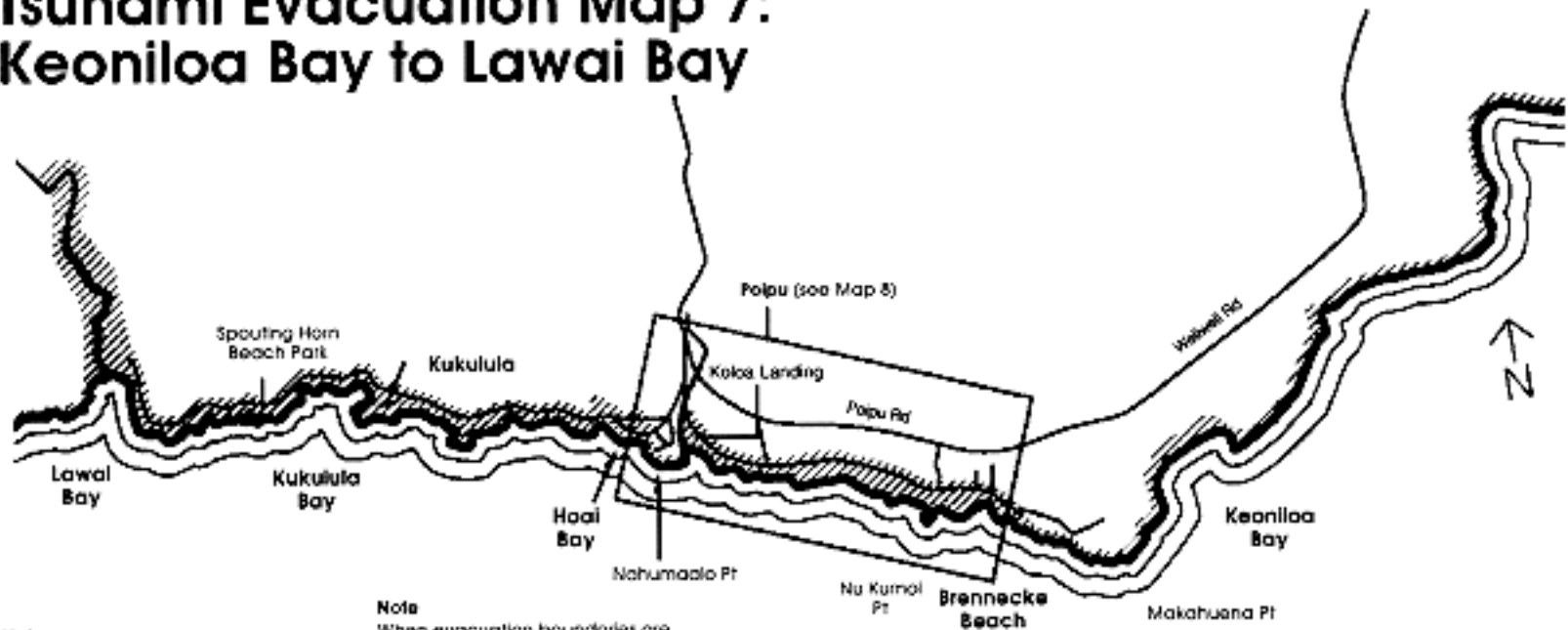
**Note**  
Secure, remove or put to sea all vessels in harbors due to the probability of strong currents and wave action.

**Note**  
When evacuation boundaries are drawn along streets and roadways, they are considered to be safe from wave action.



**Note**  
Evacuation of entire harbor area necessary to also include Kalapaki Bay area and Westin Hotel property (up to Kalapaki Road).

# Tsunami Evacuation Map 7: Keoniloa Bay to Lawai Bay



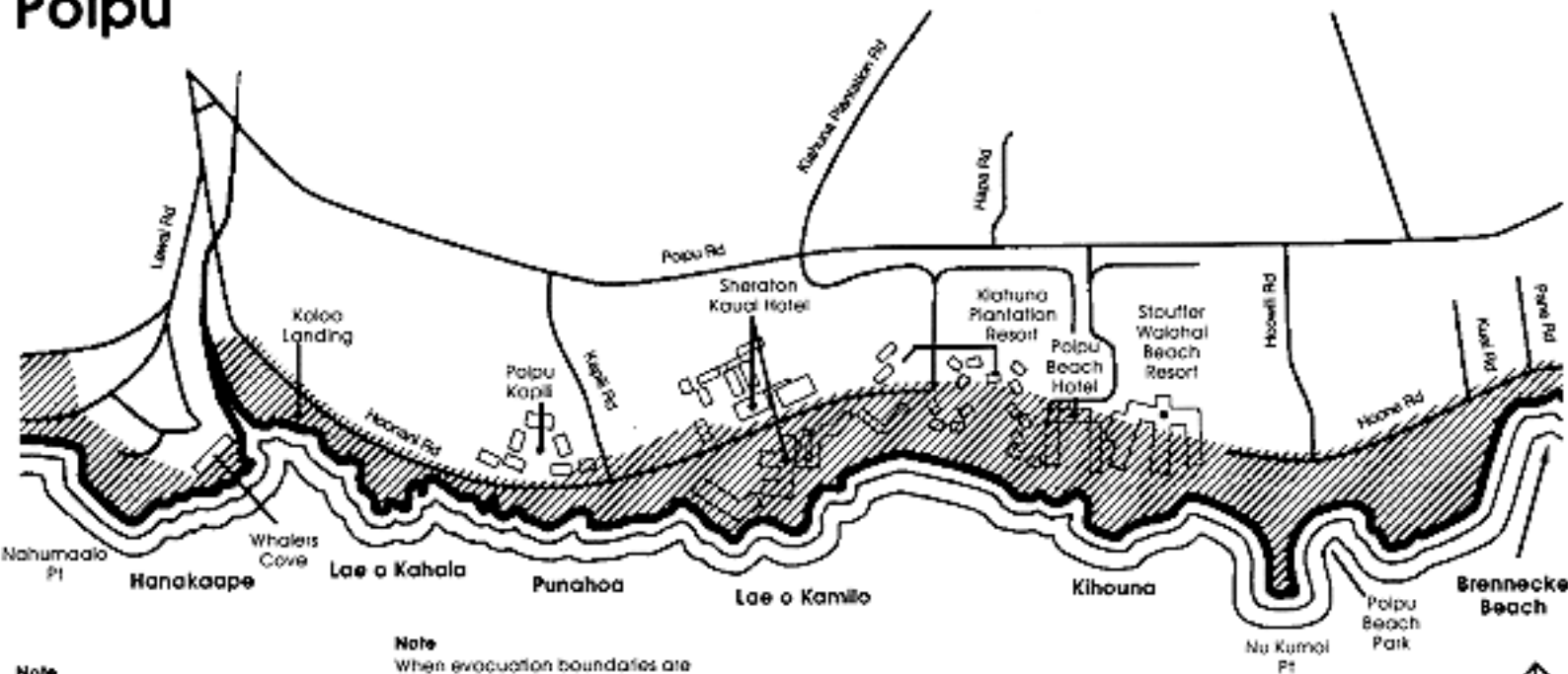
## Note

Secure, remove or put to sea all vessels in harbors due to the probability of strong currents and wave action.

## Note

When evacuation boundaries are drawn along streets and roadways, they are considered to be safe from wave action.

# Tsunami Evacuation Map 8: Poipu



**Note**

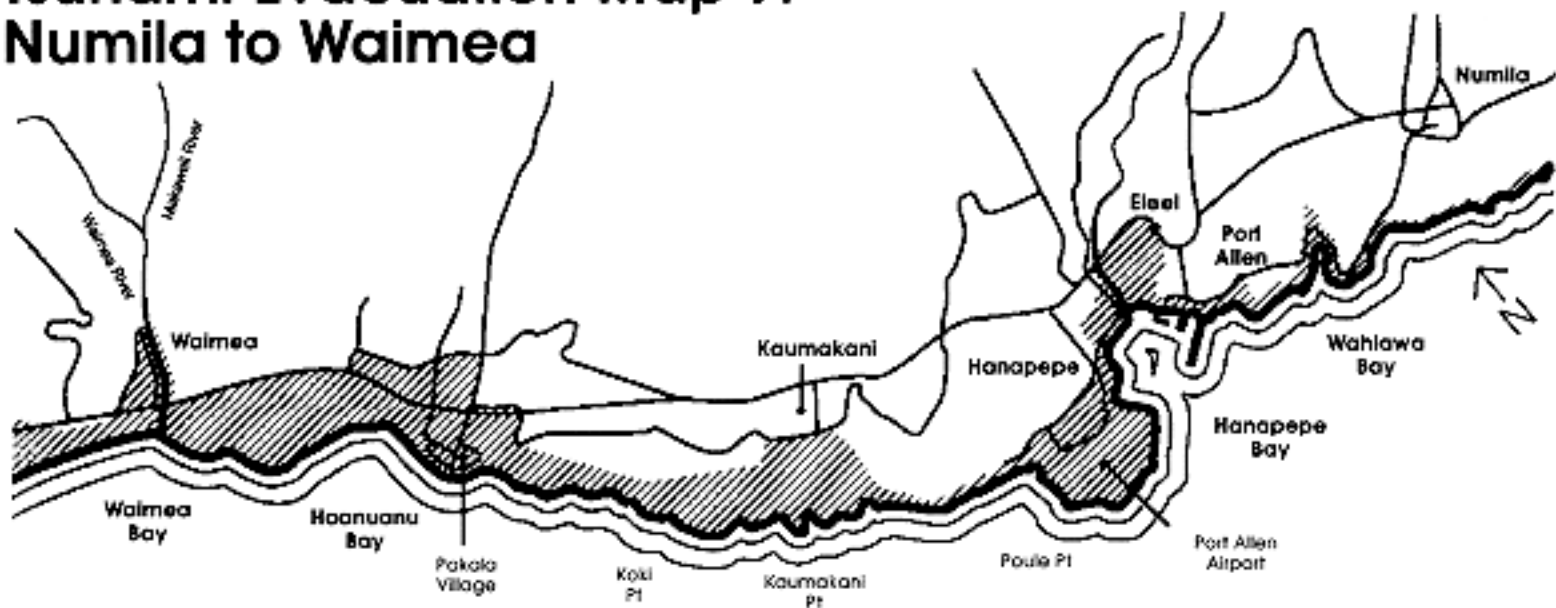
Secure, remove or put to sea all vessels in harbors due to the probability of strong currents and wave action.

**Note**

When evacuation boundaries are drawn along streets and roadways, they are considered to be safe from wave action.



# Tsunami Evacuation Map 9: Numila to Waimea



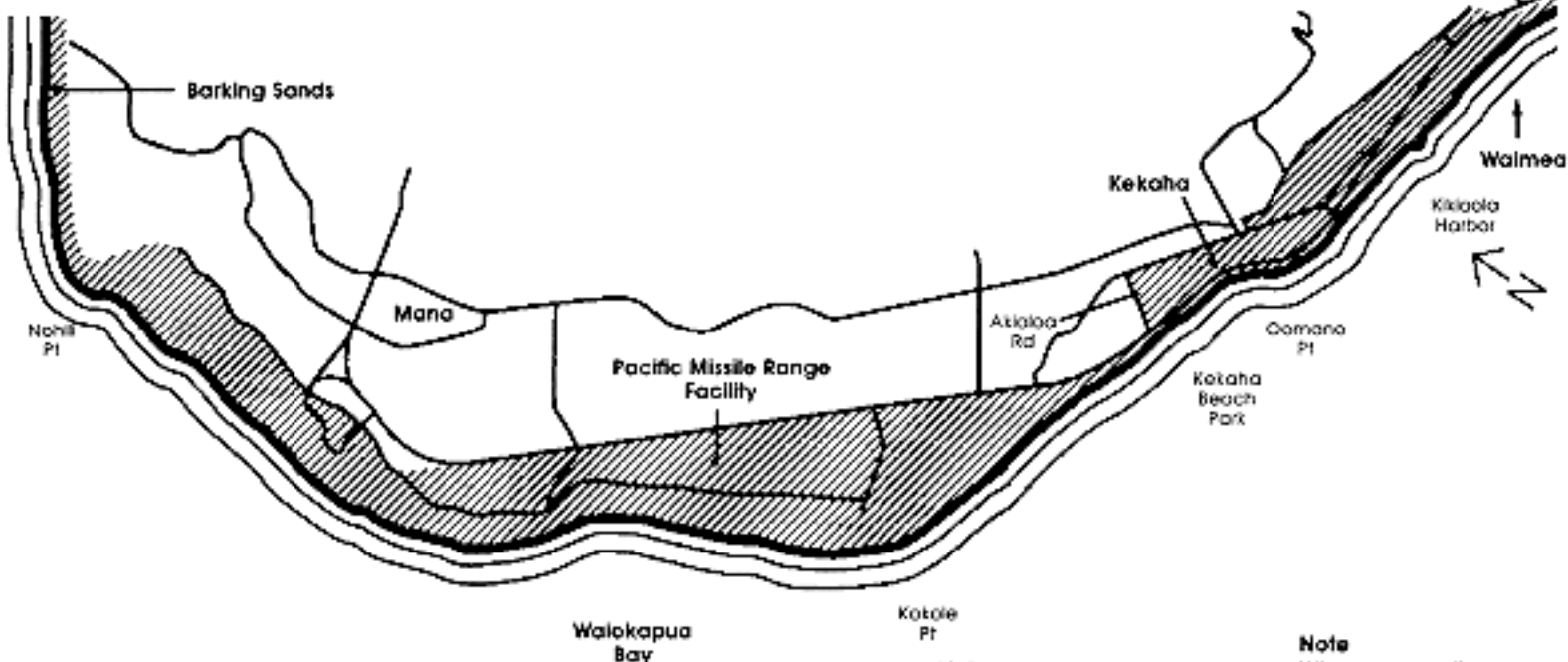
### Note

Secure, remove or put to sea all vessels in harbors due to the probability of strong currents and wave action.

### Note

When evacuation boundaries are drawn along streets and roadways, they are considered to be safe from wave action.

# Tsunami Evacuation Map 10: Waimea to Barking Sands



## Note

Secure, remove or put to sea all vessels in harbors due to the probability of strong currents and wave action.

## Note

When evacuation boundaries are drawn along streets and roadways, they are considered to be safe from wave action.